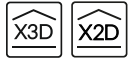


RF 6630

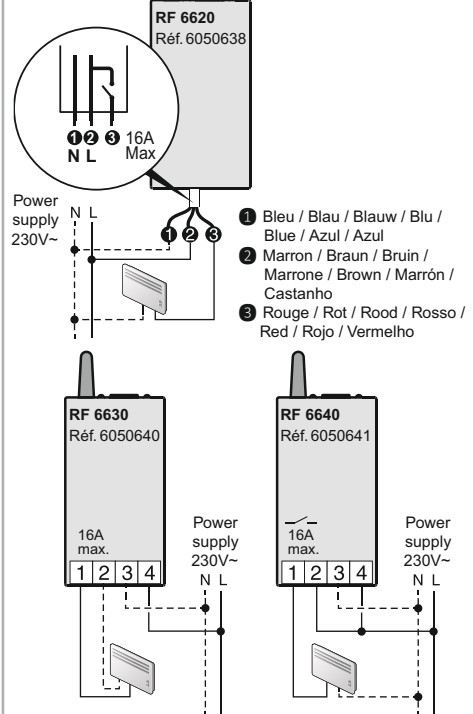
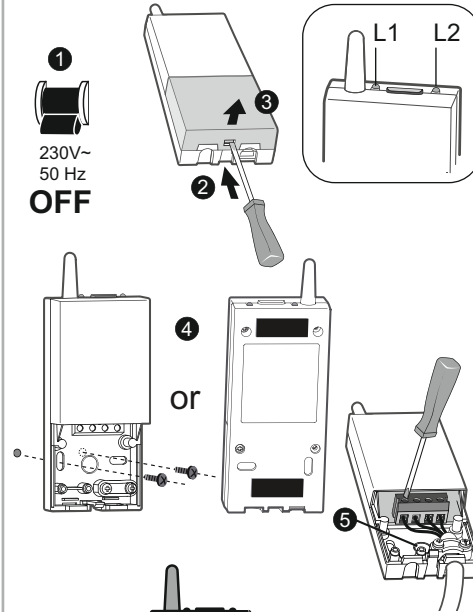
Radio-controlled receiver 16A

www.deltadore.com



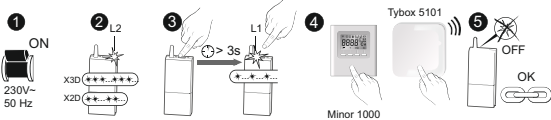
	230V~, 50 Hz - 2 VA
	868,7 MHz ÷ 869,2 MHz Maximum radio power < 10 mW Receiver category 2 300 m max.
	54 x 120 x 25 mm
	16A, 230Veff Cos φ =1
	Cable diameter 7 mm +/- 0.4 mm -
°C	0°C --> +40°C
	Rated impulse withstand voltage: 2500V
	Important product information (2 4)

Installation



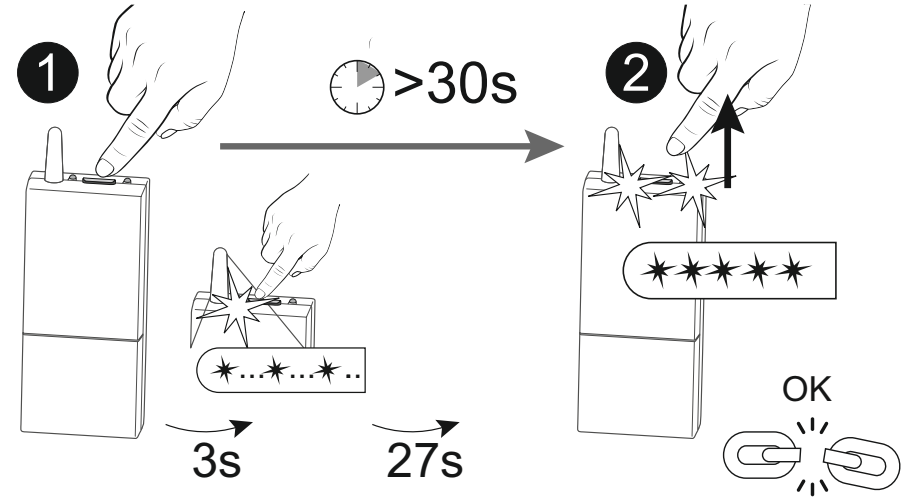
- 1 Bleu / Blau / Blauw / Blu / Blue / Azul / Azul
- 2 Marron / Braun / Bruin / Marrone / Brown / Marrón / Castanho
- 3 Rouge / Rot / Rood / Rosso / Red / Rojo / Vermelho

Association



- 1 Switch on the installation.
- 2 **1st association** The L2 indicator flashes 3 times (X3D). Press briefly on the button, if necessary, to go to X2D (2 flashes) X3D (3 flashes).
- Receiver already associated Go directly to stage 3.
- 3 Press the receiver button for 3 seconds until the L1 indicator flashes slowly. Release.
⚠ To pair with the Tydom application, briefly press the button again.
The indicator flashes more quickly.
- 4 On the transmitter, send the association command (see its user guide).
- 5 Make sure that the receiver LED has stopped flashing. The products are now associated.

Effacer les associations radio



Ideally the radio link should be deleted from the transmitter (Tydom thermostat). The following process will restore factory settings. Press and hold for 30 seconds (1):
- after 3 seconds, the L2 LED flashes slowly.
- keep the receiver button pressed until both LEDs flash. Release the button (2).

Aide

The receiver does not react to the command.
1) Check that the choice of the X2D/X3D mode is compatible with the transmitter thermostat. Switch off the receiver's power supply. When switching it back on, the L2 indicator flashes: twice (X2D), 3 times (X3D). If the choice is not what you need, delete the associations before remaking them (Association paragraph).

2) Both indicators flash simultaneously. The receiver no longer receives the thermostat signal. Check the thermostat batteries and the distance between the thermostat and the receiver. In this case, the receiver operates in "safe" mode. You can however switch to override mode by pressing once on the button. The L1 indicator becomes steady and the L2 indicator continues to flash. Pressing the button again switches the receiver to the previous mode.



Technical Support
020 7660 2919

In case of any technical problems please contact our technical support: Monday to Friday - 9am to 5pm